

Case Study

Bilingual Program Support in Denver Public Schools

Students tutored in their native language saw even greater outcome gains

Denver Public Schools serve a diverse student body and are experiencing an influx of Newcomer students (3,000 and growing).

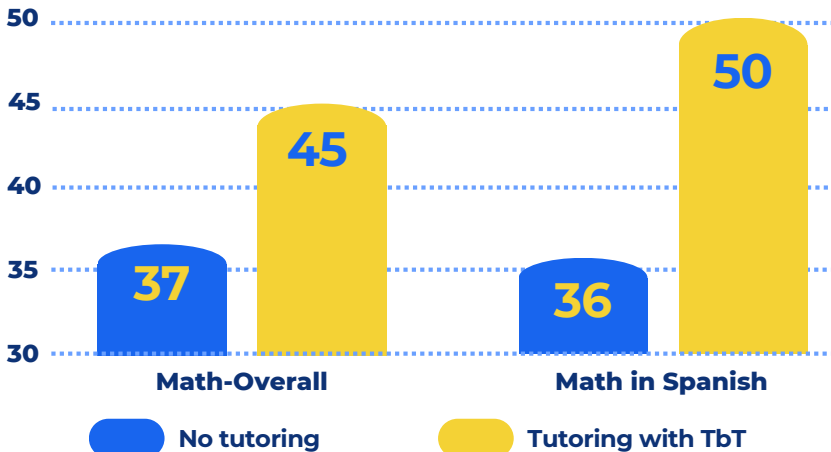
Transitional Native Language Instruction (TNLI) programs support Spanish-speaking students by starting instruction primarily in Spanish during the earlier grades. As students progress, they gradually receive more English instruction, reaching a 50/50 Spanish-English split by 4th grade.

Tutored by Teachers supported students by mirroring the school's language of instruction for each subject and grade (e.g., Language Arts in Spanish).

✓ Tutored by Teachers tutored over **800 students** with Math and English Language Arts across **11 schools**.

Students receiving Math tutoring in Spanish outgrew non-tutored students by **14 points!**

When comparing students' performance on the Renaissance STAR Math Assessment, on average, **those who received tutoring grew 8 points more than their peers who were not tutored.**



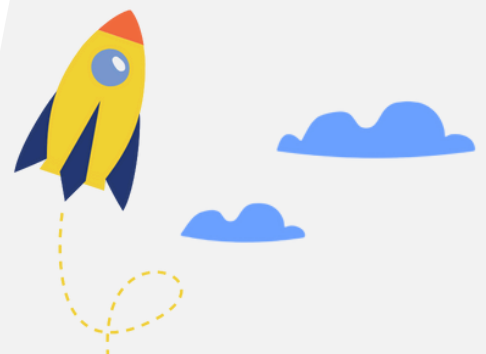
Program Overview:

ELA & Math
including Spanish language support

K-5

30
minute sessions per week

811
students



EL Support with Tutored by Teachers

TbT provided 5 weeks of instruction in Math, ELA, and Phonics with bilingual teachers to Spanish-speaking students in Grades K-9 in Brunswick County Schools, North Carolina.

33%

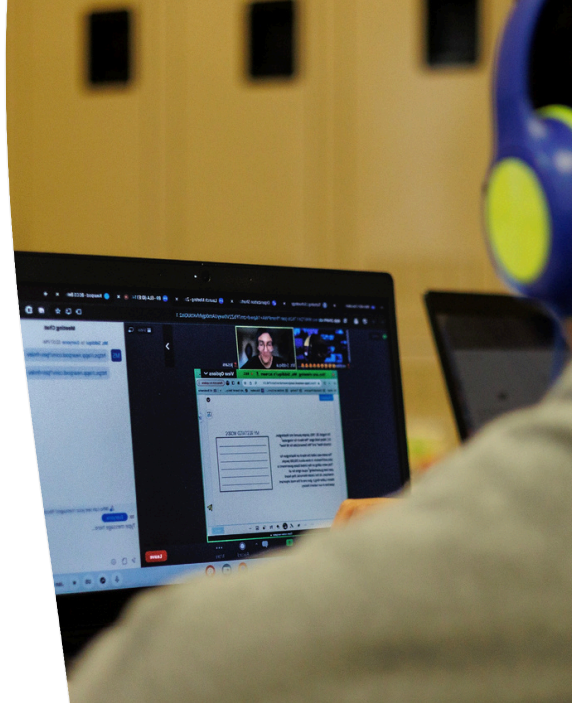
growth in Math for all students.

19%

growth in ELA for 8th grade students.

20-30%

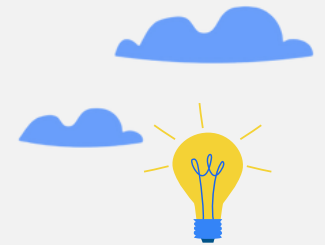
growth in Phonics skills for Kindergarten students.



"What I like most about TbT is your ongoing support - the live tutors, the flexibility the teachers have in adjusting their small groups, bilingual tutors for our dual language classrooms - and that it is aligned to the standards."

Cherie Love

Principal
Doña Ana Elementary School, Las Cruces, New Mexico



"Anything we bring within the school, we want it to promote biliteracy, bilingualism and biculturalism. That is something we're continuing to work on with an equity lens, but for tutoring right now, we don't have to — **that's something that is hard to find.**"

Andrea Renteria

Principal
Garden Place Academy - a TNLI school
Denver Public Schools

Our Teachers

- ✓ **62%** with graduate degrees
- ✓ **52%** Special Ed or EL certified
- ✓ **12 years** of average classroom experience
- ✓ **40%** identify as people of color
- ✓ **All** are rigorously vetted and monitored

Let's Chat

Tutored by Teachers can help you **fund, design, and implement** a tutoring program from beginning to end to fit your school's needs and prioritize outcomes for students.



Learn more at
tutored.live

Get in touch at:
partnerships@tutored.live



Tutored by Teachers ✓