

Case Study

North Carolina Migrant Education Program

Tutored by Teachers drives two to three months of reading growth for migratory students

Tutored by Teachers works with **The North Carolina Department of Public Instruction (NCDPI)** to serve migratory students through the North Carolina Migrant Education Program.

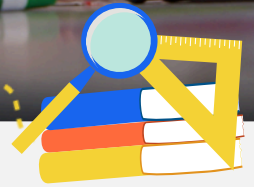
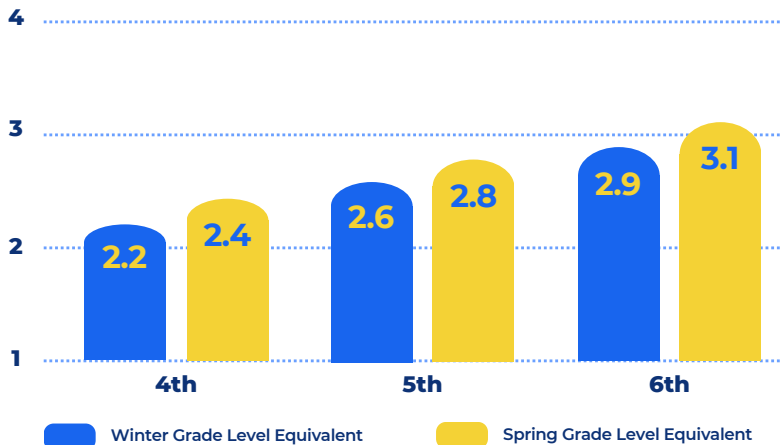
Starting in January 2024, TbT piloted a high-dosage tutoring program with five schools in Brunswick County and one school in Pitt County, North Carolina.

Our Teacher-Tutors, many of whom are bilingual and ELL-certified, delivered **instruction in English with Spanish support.**

✓ More than 80 students participated in nearly 1,000 hours of TbT tutoring during this pilot program.

Students saw 2 months of reading growth!

Based on Renaissance STAR Reading or STAR Early Literacy student assessments at the start and end of the program, **TbT students made two months' worth of reading growth.**



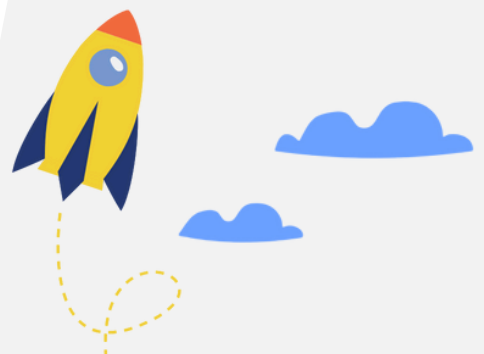
Program Overview:

ELA & Math

K-12

30
minute sessions
per week

4:1
Tutor-student ratio



EL Support with Tutored by Teachers

TbT provided 5 weeks of instruction in Math, ELA, and Phonics with bilingual teachers to Spanish-speaking students in Grades K-9 in Brunswick County Schools, North Carolina.

33%

growth in Math for all students.

19%

growth in ELA for 8th grade students.

20-30%

growth in Phonics skills for Kindergarten students.



"What I like most about TbT is your ongoing support - the live tutors, the flexibility the teachers have in adjusting their small groups, bilingual tutors for our dual language classrooms - and that it is aligned to the standards."

Cherie Love

Principal

Doña Ana Elementary School, Las Cruces, New Mexico



"It's really important that this is available for students. This is the thing that teachers struggle with the most - differentiating for all of the students in their class. **This is differentiated perfectly.**"

Angelita Miller

Coordinator

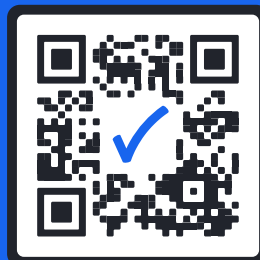
Migrant Education Program
Clackamas Education Service District

Our Teachers

- ✓ **62%** with graduate degrees
- ✓ **52%** Special Ed or EL certified
- ✓ **12 years** of average classroom experience
- ✓ **40%** identify as people of color
- ✓ **All** are rigorously vetted and monitored

Let's Chat

Tutored by Teachers can help you **fund, design, and implement** a tutoring program from beginning to end to fit your school's needs and prioritize outcomes for students.



Learn more at
tutored.live

Get in touch at:
partnerships@tutored.live



Tutored by Teachers ✓